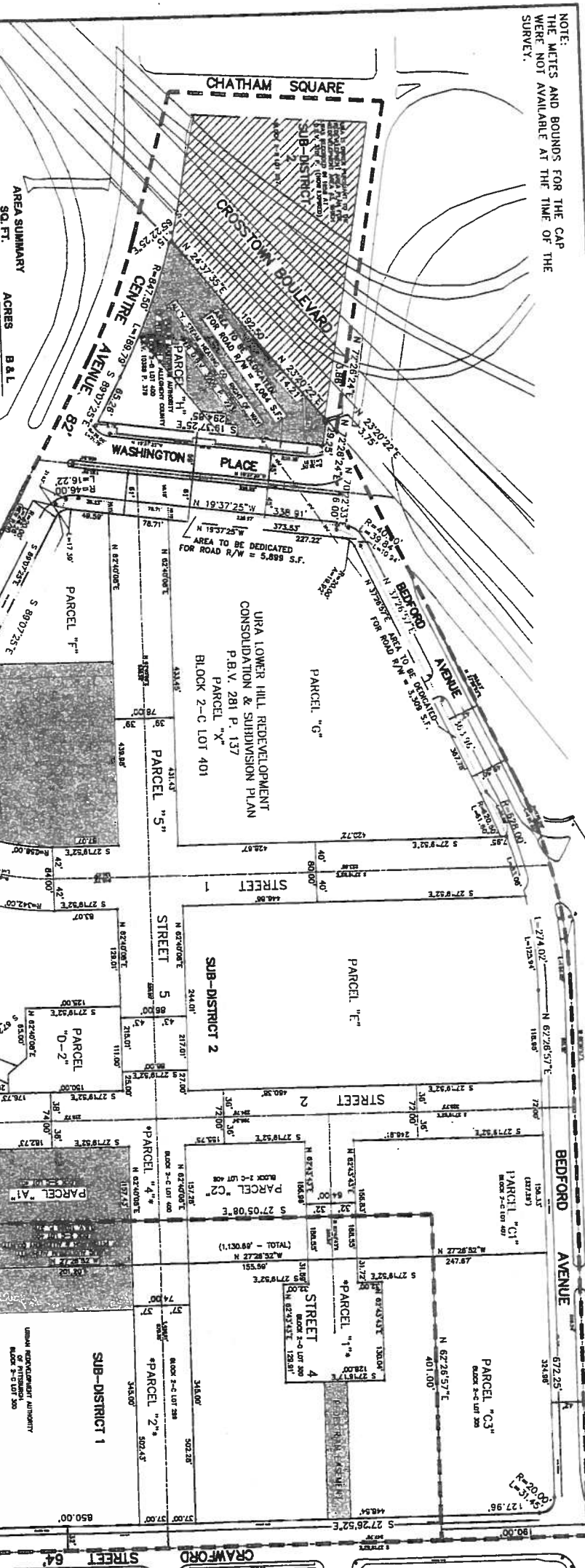


NOTE: THE METERS AND BOUNDS FOR THE CAP WERE NOT AVAILABLE AT THE TIME OF THE SURVEY.



AREA SUMMARY

| SO. FT. | ACRES | B. & L. |
|----------------|---------|---------|
| 31,760.6969 | 0.7291 | 2-C-403 |
| 182,672.1832 | 3.7344 | 2-C-301 |
| 416.1704 | 0.0096 | |
| 162,256.0128 | 3.7248 | |
| 55,642.6049 | 1.2774 | |
| 314.5401 | 0.0072 | |
| 55,957.1450 | 1.2848 | 2-C-405 |
| 19,547.7787 | 0.4488 | |
| 71.7771 | 0.0016 | |
| 19,619.5558 | 0.4504 | 2-C-305 |
| 38,720.2371 | 0.8889 | 2-C-407 |
| 24,458.5417 | 0.5625 | 2-C-408 |
| 142,680.1889 | 3.2755 | 2-C-305 |
| 18,662.1184 | 0.4284 | 2-C-300 |
| 25,528.6122 | 0.5861 | 2-C-389 |
| 30,001.1820 | 0.6887 | 2-C-388 |
| 30,001.1820 | 0.6887 | |
| 30,001.1820 | 0.6887 | |
| 107,985.7096 | 2.4790 | 2-C-400 |
| 82,506.5293 | 1.8842 | 2-C-401 |
| 14,762.4873 | 0.3389 | 2-C-401 |
| 111,688.7241 | 2.5842 | 2-C-401 |
| 76,725.9154 | 1.7614 | 2-C-401 |
| 135,525.4886 | 3.1112 | 2-C-404 |
| 43,058.6696 | 0.9885 | 2-B-400 |
| 4,084.0302 | 0.0933 | |
| 38,994.6394 | 0.8952 | 2-B-400 |
| 119,708.3219 | 2.7481 | 2-C-401 |
| 1,467.6719 | 0.0337 | |
| 13,688.2800 | 0.3142 | |
| 1,243,583.9188 | 28.5483 | |

ADJUSTED PERMETER RIGHT OF WAY: 1,467.6719 0.0337
 VACATED RIGHT OF WAY: 13,688.2800 0.3142
 DEDICATED RIGHT OF WAY: 1,243,583.9188 28.5483
 TOTAL: 1,243,583.9188 28.5483

STREET PARCELS 1, 2, 3, 4 AND 5 ARE TO BE DEDICATED AS FUTURE PUBLIC RIGHTS OF WAY.

NOTE: THIS LOWER HILL PLANNED DEVELOPMENT DISTRICT IMPROVEMENT SUBDIVISION SITE PLAN No. 1 IS RECORDED PURSUANT TO SECTION 909.01 OF THE CITY OF PITTSBURGH ZONING ORDINANCE. THE SP DISTRICT WILL BE BOUNDED AS OUTLINED IN THE THIS PLAN AND WILL CONTAIN THREE SUB DISTRICTS IDENTIFIED ON THIS PLAN AS SUB DISTRICT 1, SUB DISTRICT 2 AND SUB DISTRICT 3.

RIGHT OF WAY NOTE:
 Street right of way area vacated/dedicated pursuant to that certain Resolution No. _____ passed by City Council on _____ 2015.

SUB - DISTRICT BOUNDARY
 INDICATES "URBAN OPEN SPACE"
 "POTENTIAL ADDITIONAL URBAN OPEN SPACE" (CAP OPEN SPACE)

| DATE | REVISION |
|---------|-------------------------|
| 2/27/15 | ADD R/W NOTE |
| 3/3/15 | CITY REVIEW & D-1 & D-2 |
| 3/17/15 | URBAN OPEN SPACE |
| 3/18/15 | CAP OPEN SPACE |
| 3/19/15 | OPEN SPACE |
| 3/20/15 | PARCEL "5" |

LOWER HILL PLANNED DEVELOPMENT DISTRICT IMPROVEMENT SUBDIVISION SITE PLAN No. 1
 STUDIED IN WARD 2ND & 3RD CITY OF PITTSBURGH ALLEGHENY COUNTY, PA
 MADE FOR PITTSBURGH ARENA REAL ESTATE DEVELOPMENT
 SCALE: 1" = 80'
 DATE: FEBRUARY 25, 2015
 PHONE: (412) 885-8888 FAX: (412) 885-5146
 12-597 sub.dwg

ALL CONSTRUCTION AND USE IS REQUIRED TO BE IN ACCORDANCE WITH ZONING LAW AND THE PRELIMINARY LAND DEVELOPMENT PLAN APPROVED BY PLANNING COMMISSION ON DECEMBER 2, 2014 AND FINAL LAND DEVELOPMENT PLAN APPROVED ON _____ AND ON FILE WITH THE CITY OF PITTSBURGH. IT IS UNDERSTOOD AND AGREED THAT SUCH DEVELOPMENT PLAN ON FILE EXISTS FOR THE PURPOSE OF PUBLIC REGULATION AND DOES NOT ESTABLISH ANY PRIVATE RIGHTS, DUTIES, EASEMENTS, SERVITUDES OR COVENANT.

THIS LOWER HILL PLANNED DEVELOPMENT DISTRICT IMPROVEMENT SUBDIVISION SITE PLAN No. 1 (I) AMENDS THE URA LOWER HILL CONSOLIDATION AND SUBDIVISION PLAN RECORDED AT PLAN BOOK VOLUME 281, PAGE 137 AND INCORPORATES ALL OF THE PROPERTY SUBJECT TO SUCH PLAN (II) AMENDS THE PITTSBURGH ARENA URA PLAN OF LOTS RECORDED AT PLAN BOOK VOLUME 276, PAGE 34, BY INCORPORATING INTO THIS PLAN, PARCEL 2R THIRD REVISION THEREOF AND (III) INCLUDES PROPERTY KNOWN AS TAX PARCEL 2-B LOT 257.

CITY OF PITTSBURGH
 DEPARTMENT OF CITY PLANNING
 APPROVED: _____
 CITY PLANNING COMMISSION
 ATTEST: _____
 Secretary
 Planners Commission: 9/1/15 SW.

[Signature]
 City Planner

KNOW ALL MEN BY THESE PRESENTS, that the Sports & Exhibition Authority of Pittsburgh and Allegheny County, a body corporate and politic, organized under the Sports and Exhibition Authority Act, P.S. Section 5501-A et seq. does hereby adopt this plan as its Plan of Lots of its property, situate in the Second and Third Ward, City of Pittsburgh, Allegheny County, Pennsylvania.

IN WITNESS WHEREOF, the said corporation has caused its corporate seal to be affixed by the hand of its Executive Director and the same to be attested by its Secretary, this 31st day of March, 2015.

ATTEST:
 Sports & Exhibition Authority of Pittsburgh and Allegheny County
 Executive Director

COMMONWEALTH OF PENNSYLVANIA)
) SS:
 COUNTY OF ALLEGHENY)

On this the 31st day of March, 2015, before me, a Notary Public, the undersigned officer personally appeared DARIN K. CONTINO, who acknowledged himself/herself to be the Executive Director of the Sports & Exhibition Authority of Pittsburgh and Allegheny County, a body corporate and that on such Executive Director, being authorized by the Board of Directors, executed the foregoing instrument for the purposes therein contained by signing the name of the corporation by himself/herself as Executive Director.

In Witness Whereof, I hereunto set my hand and official seal, sworn to and subscribed before me the day and date above written.

WITNESS MY HAND AND NOTARIAL SEAL THIS 31st day of March, 2015.

My Commission Expires the 14th day of July, 2016.

James Leach
 Notary Public

(SEAL)

We, the Sports & Exhibition Authority of Pittsburgh and Allegheny County, are owners of a portion of the Lower Hill Planned Development District Improvement Subdivision Site Plan No. 1, being Lot 2R Third Revision as shown in the Pittsburgh Urban Redevelopment Authority Subdivision Site Plan No. 1, being Parcel "A-1", Parcel "B-1", Parcel "C-1" and Parcel "D-1" as shown in the URA Lower Hill Redevelopment and Subdivision Plan recorded at Plan Book Volume 281, Page 137, in accordance with the certification of Title set forth in the URA Lower Hill Redevelopment and Subdivision Plan pursuant to a Deed from Urban Redevelopment Authority of Pittsburgh, recorded at Deed Book 2-C-400, Page 150. Tax Parcel reference: 2-B-400, 2-C-401, 2-C-402, 2-C-403, 2-C-404, 2-C-405, 2-C-406, 2-C-407, 2-C-408, 2-C-409, 2-C-410, 2-C-411, 2-C-412, 2-C-413, 2-C-414, 2-C-415, 2-C-416, 2-C-417, 2-C-418, 2-C-419, 2-C-420, 2-C-421, 2-C-422, 2-C-423, 2-C-424, 2-C-425, 2-C-426, 2-C-427, 2-C-428, 2-C-429, 2-C-430, 2-C-431, 2-C-432, 2-C-433, 2-C-434, 2-C-435, 2-C-436, 2-C-437, 2-C-438, 2-C-439, 2-C-440, 2-C-441, 2-C-442, 2-C-443, 2-C-444, 2-C-445, 2-C-446, 2-C-447, 2-C-448, 2-C-449, 2-C-450, 2-C-451, 2-C-452, 2-C-453, 2-C-454, 2-C-455, 2-C-456, 2-C-457, 2-C-458, 2-C-459, 2-C-460, 2-C-461, 2-C-462, 2-C-463, 2-C-464, 2-C-465, 2-C-466, 2-C-467, 2-C-468, 2-C-469, 2-C-470, 2-C-471, 2-C-472, 2-C-473, 2-C-474, 2-C-475, 2-C-476, 2-C-477, 2-C-478, 2-C-479, 2-C-480, 2-C-481, 2-C-482, 2-C-483, 2-C-484, 2-C-485, 2-C-486, 2-C-487, 2-C-488, 2-C-489, 2-C-490, 2-C-491, 2-C-492, 2-C-493, 2-C-494, 2-C-495, 2-C-496, 2-C-497, 2-C-498, 2-C-499, 2-C-500, 2-C-501, 2-C-502, 2-C-503, 2-C-504, 2-C-505, 2-C-506, 2-C-507, 2-C-508, 2-C-509, 2-C-510, 2-C-511, 2-C-512, 2-C-513, 2-C-514, 2-C-515, 2-C-516, 2-C-517, 2-C-518, 2-C-519, 2-C-520, 2-C-521, 2-C-522, 2-C-523, 2-C-524, 2-C-525, 2-C-526, 2-C-527, 2-C-528, 2-C-529, 2-C-530, 2-C-531, 2-C-532, 2-C-533, 2-C-534, 2-C-535, 2-C-536, 2-C-537, 2-C-538, 2-C-539, 2-C-540, 2-C-541, 2-C-542, 2-C-543, 2-C-544, 2-C-545, 2-C-546, 2-C-547, 2-C-548, 2-C-549, 2-C-550, 2-C-551, 2-C-552, 2-C-553, 2-C-554, 2-C-555, 2-C-556, 2-C-557, 2-C-558, 2-C-559, 2-C-560, 2-C-561, 2-C-562, 2-C-563, 2-C-564, 2-C-565, 2-C-566, 2-C-567, 2-C-568, 2-C-569, 2-C-570, 2-C-571, 2-C-572, 2-C-573, 2-C-574, 2-C-575, 2-C-576, 2-C-577, 2-C-578, 2-C-579, 2-C-580, 2-C-581, 2-C-582, 2-C-583, 2-C-584, 2-C-585, 2-C-586, 2-C-587, 2-C-588, 2-C-589, 2-C-590, 2-C-591, 2-C-592, 2-C-593, 2-C-594, 2-C-595, 2-C-596, 2-C-597, 2-C-598, 2-C-599, 2-C-600, 2-C-601, 2-C-602, 2-C-603, 2-C-604, 2-C-605, 2-C-606, 2-C-607, 2-C-608, 2-C-609, 2-C-610, 2-C-611, 2-C-612, 2-C-613, 2-C-614, 2-C-615, 2-C-616, 2-C-617, 2-C-618, 2-C-619, 2-C-620, 2-C-621, 2-C-622, 2-C-623, 2-C-624, 2-C-625, 2-C-626, 2-C-627, 2-C-628, 2-C-629, 2-C-630, 2-C-631, 2-C-632, 2-C-633, 2-C-634, 2-C-635, 2-C-636, 2-C-637, 2-C-638, 2-C-639, 2-C-640, 2-C-641, 2-C-642, 2-C-643, 2-C-644, 2-C-645, 2-C-646, 2-C-647, 2-C-648, 2-C-649, 2-C-650, 2-C-651, 2-C-652, 2-C-653, 2-C-654, 2-C-655, 2-C-656, 2-C-657, 2-C-658, 2-C-659, 2-C-660, 2-C-661, 2-C-662, 2-C-663, 2-C-664, 2-C-665, 2-C-666, 2-C-667, 2-C-668, 2-C-669, 2-C-670, 2-C-671, 2-C-672, 2-C-673, 2-C-674, 2-C-675, 2-C-676, 2-C-677, 2-C-678, 2-C-679, 2-C-680, 2-C-681, 2-C-682, 2-C-683, 2-C-684, 2-C-685, 2-C-686, 2-C-687, 2-C-688, 2-C-689, 2-C-690, 2-C-691, 2-C-692, 2-C-693, 2-C-694, 2-C-695, 2-C-696, 2-C-697, 2-C-698, 2-C-699, 2-C-700, 2-C-701, 2-C-702, 2-C-703, 2-C-704, 2-C-705, 2-C-706, 2-C-707, 2-C-708, 2-C-709, 2-C-710, 2-C-711, 2-C-712, 2-C-713, 2-C-714, 2-C-715, 2-C-716, 2-C-717, 2-C-718, 2-C-719, 2-C-720, 2-C-721, 2-C-722, 2-C-723, 2-C-724, 2-C-725, 2-C-726, 2-C-727, 2-C-728, 2-C-729, 2-C-730, 2-C-731, 2-C-732, 2-C-733, 2-C-734, 2-C-735, 2-C-736, 2-C-737, 2-C-738, 2-C-739, 2-C-740, 2-C-741, 2-C-742, 2-C-743, 2-C-744, 2-C-745, 2-C-746, 2-C-747, 2-C-748, 2-C-749, 2-C-750, 2-C-751, 2-C-752, 2-C-753, 2-C-754, 2-C-755, 2-C-756, 2-C-757, 2-C-758, 2-C-759, 2-C-760, 2-C-761, 2-C-762, 2-C-763, 2-C-764, 2-C-765, 2-C-766, 2-C-767, 2-C-768, 2-C-769, 2-C-770, 2-C-771, 2-C-772, 2-C-773, 2-C-774, 2-C-775, 2-C-776, 2-C-777, 2-C-778, 2-C-779, 2-C-780, 2-C-781, 2-C-782, 2-C-783, 2-C-784, 2-C-785, 2-C-786, 2-C-787, 2-C-788, 2-C-789, 2-C-790, 2-C-791, 2-C-792, 2-C-793, 2-C-794, 2-C-795, 2-C-796, 2-C-797, 2-C-798, 2-C-799, 2-C-800, 2-C-801, 2-C-802, 2-C-803, 2-C-804, 2-C-805, 2-C-806, 2-C-807, 2-C-808, 2-C-809, 2-C-810, 2-C-811, 2-C-812, 2-C-813, 2-C-814, 2-C-815, 2-C-816, 2-C-817, 2-C-818, 2-C-819, 2-C-820, 2-C-821, 2-C-822, 2-C-823, 2-C-824, 2-C-825, 2-C-826, 2-C-827, 2-C-828, 2-C-829, 2-C-830, 2-C-831, 2-C-832, 2-C-833, 2-C-834, 2-C-835, 2-C-836, 2-C-837, 2-C-838, 2-C-839, 2-C-840, 2-C-841, 2-C-842, 2-C-843, 2-C-844, 2-C-845, 2-C-846, 2-C-847, 2-C-848, 2-C-849, 2-C-850, 2-C-851, 2-C-852, 2-C-853, 2-C-854, 2-C-855, 2-C-856, 2-C-857, 2-C-858, 2-C-859, 2-C-860, 2-C-861, 2-C-862, 2-C-863, 2-C-864, 2-C-865, 2-C-866, 2-C-867, 2-C-868, 2-C-869, 2-C-870, 2-C-871, 2-C-872, 2-C-873, 2-C-874, 2-C-875, 2-C-876, 2-C-877, 2-C-878, 2-C-879, 2-C-880, 2-C-881, 2-C-882, 2-C-883, 2-C-884, 2-C-885, 2-C-886, 2-C-887, 2-C-888, 2-C-889, 2-C-890, 2-C-891, 2-C-892, 2-C-893, 2-C-894, 2-C-895, 2-C-896, 2-C-897, 2-C-898, 2-C-899, 2-C-900, 2-C-901, 2-C-902, 2-C-903, 2-C-904, 2-C-905, 2-C-906, 2-C-907, 2-C-908, 2-C-909, 2-C-910, 2-C-911, 2-C-912, 2-C-913, 2-C-914, 2-C-915, 2-C-916, 2-C-917, 2-C-918, 2-C-919, 2-C-920, 2-C-921, 2-C-922, 2-C-923, 2-C-924, 2-C-925, 2-C-926, 2-C-927, 2-C-928, 2-C-929, 2-C-930, 2-C-931, 2-C-932, 2-C-933, 2-C-934, 2-C-935, 2-C-936, 2-C-937, 2-C-938, 2-C-939, 2-C-940, 2-C-941, 2-C-942, 2-C-943, 2-C-944, 2-C-945, 2-C-946, 2-C-947, 2-C-948, 2-C-949, 2-C-950, 2-C-951, 2-C-952, 2-C-953, 2-C-954, 2-C-955, 2-C-956, 2-C-957, 2-C-958, 2-C-959, 2-C-960, 2-C-961, 2-C-962, 2-C-963, 2-C-964, 2-C-965, 2-C-966, 2-C-967, 2-C-968, 2-C-969, 2-C-970, 2-C-971, 2-C-972, 2-C-973, 2-C-974, 2-C-975, 2-C-976, 2-C-977, 2-C-978, 2-C-979, 2-C-980, 2-C-981, 2-C-982, 2-C-983, 2-C-984, 2-C-985, 2-C-986, 2-C-987, 2-C-988, 2-C-989, 2-C-990, 2-C-991, 2-C-992, 2-C-993, 2-C-994, 2-C-995, 2-C-996, 2-C-997, 2-C-998, 2-C-999, 2-C-1000, 2-C-1001, 2-C-1002, 2-C-1003, 2-C-1004, 2-C-1005, 2-C-1006, 2-C-1007, 2-C-1008, 2-C-1009, 2-C-1010, 2-C-1011, 2-C-1012, 2-C-1013, 2-C-1014, 2-C-1015, 2-C-1016, 2-C-1017, 2-C-1018, 2-C-1019, 2-C-1020, 2-C-1021, 2-C-1022, 2-C-1023, 2-C-1024, 2-C-1025, 2-C-1026, 2-C-1027, 2-C-1028, 2-C-1029, 2-C-1030, 2-C-1031, 2-C-1032, 2-C-1033, 2-C-1034, 2-C-1035, 2-C-1036, 2-C-1037, 2-C-1038, 2-C-1039, 2-C-1040, 2-C-1041, 2-C-1042, 2-C-1043, 2-C-1044, 2-C-1045, 2-C-1046, 2-C-1047, 2-C-1048, 2-C-1049, 2-C-1050, 2-C-1051, 2-C-1052, 2-C-1053, 2-C-1054, 2-C-1055, 2-C-1056, 2-C-1057, 2-C-1058, 2-C-1059, 2-C-1060, 2-C-1061, 2-C-1062, 2-C-1063, 2-C-1064, 2-C-1065, 2-C-1066, 2-C-1067, 2-C-1068, 2-C-1069, 2-C-1070, 2-C-1071, 2-C-1072, 2-C-1073, 2-C-1074, 2-C-1075, 2-C-1076, 2-C-1077, 2-C-1078, 2-C-1079, 2-C-1080, 2-C-1081, 2-C-1082, 2-C-1083, 2-C-1084, 2-C-1085, 2-C-1086, 2-C-1087, 2-C-1088, 2-C-1089, 2-C-1090, 2-C-1091, 2-C-1092, 2-C-1093, 2-C-1094, 2-C-1095, 2-C-1096, 2-C-1097, 2-C-1098, 2-C-1099, 2-C-1100, 2-C-1101, 2-C-1102, 2-C-1103, 2-C-1104, 2-C-1105, 2-C-1106, 2-C-1107, 2-C-1108, 2-C-1109, 2-C-1110, 2-C-1111, 2-C-1112, 2-C-1113, 2-C-1114, 2-C-1115, 2-C-1116, 2-C-1117, 2-C-1118, 2-C-1119, 2-C-1120, 2-C-1121, 2-C-1122, 2-C-1123, 2-C-1124, 2-C-1125, 2-C-1126, 2-C-1127, 2-C-1128, 2-C-1129, 2-C-1130, 2-C-1131, 2-C-1132, 2-C-1133, 2-C-1134, 2-C-1135, 2-C-1136, 2-C-1137, 2-C-1138, 2-C-1139, 2-C-1140, 2-C-1141, 2-C-1142, 2-C-1143, 2-C-1144, 2-C-1145, 2-C-1146, 2-C-1147, 2-C-1148, 2-C-1149, 2-C-1150, 2-C-1151, 2-C-1152, 2-C-1153, 2-C-1154, 2-C-1155, 2-C-1156, 2-C-1157, 2-C-1158, 2-C-1159, 2-C-1160, 2-C-1161, 2-C-1162, 2-C-1163, 2-C-1164, 2-C-1165, 2-C-1166, 2-C-1167, 2-C-1168, 2-C-1169, 2-C-1170, 2-C-1171, 2-C-1172, 2-C-1173, 2-C-1174, 2-C-1175, 2-C-1176, 2-C-1177, 2-C-1178, 2-C-1179, 2-C-1180, 2-C-1181, 2-C-1182, 2-C-1183, 2-C-1184, 2-C-1185, 2-C-1186, 2-C-1187, 2-C-1188, 2-C-1189, 2-C-1190, 2-C-1191, 2-C-1192, 2-C-1193, 2-C-1194, 2-C-1195, 2-C-1196, 2-C-1197, 2-C-1198, 2-C-1199, 2-C-1200, 2-C-1201, 2-C-1202, 2-C-1203, 2-C-1204, 2-C-1205, 2-C-1206, 2-C-1207, 2-C-1208, 2-C-1209, 2-C-1210, 2-C-1211, 2-C-1212, 2-C-1213, 2-C-1214, 2-C-1215, 2-C-1216, 2-C-1217, 2-C-1218, 2-C-1219, 2-C-1220, 2-C-1221, 2-C-1222, 2-C-1223, 2-C-1224, 2-C-1225, 2-C-1226, 2-C-1227, 2-C-1228, 2-C-1229, 2-C-1230, 2-C-1231, 2-C-1232, 2-C-1233, 2-C-1234, 2-C-1235, 2-C-1236, 2-C-1237, 2-C-1238, 2-C-1239, 2-C-1240, 2-C-1241, 2-C-1242, 2-C-1243, 2-C-1244, 2-C-1245, 2-C-1246, 2-C-1247, 2-C-1248, 2-C-1249, 2-C-1250, 2-C-1251, 2-C-1252, 2-C-1253, 2-C-1254, 2-C-1255, 2-C-1256, 2-C-1257, 2-C-1258, 2-C-1259, 2-C-1260, 2-C-1261, 2-C-1262, 2-C-1263, 2-C-1264, 2-C-1265, 2-C-1266, 2-C-1267, 2-C-1268, 2-C-1269, 2-C-1270, 2-C-1271, 2-C-1272, 2-C-1273, 2-C-1274, 2-C-1275, 2-C-1276, 2-C-1277, 2-C-1278, 2-C-1279, 2-C-1280, 2-C-1281, 2-C-1282, 2-C-1283, 2-C-1284, 2-C-1285, 2-C-1286, 2-C-1287, 2-C-1288, 2-C-1289, 2-C-1290, 2-C-1291, 2-C-1292, 2-C-1293, 2-C-1294, 2-C-1295, 2-C-1296, 2-C-1297, 2-C-1298, 2-C-1299, 2-C-1300, 2-C-1301, 2-C-1302, 2-C-1303, 2-C-1304, 2-C-1305, 2-C-1306, 2-C-1307, 2-C-1308, 2-C-1309, 2-C-1310, 2-C-1311, 2-C-1312, 2-C-1313, 2-C-1314, 2-C-1315, 2-C-1316, 2-C-1317, 2-C-1318, 2-C-1319, 2-C-1320, 2-C-1321, 2-C-1322, 2-C-1323, 2-C-1324, 2-C-1325, 2-C-1326, 2-C-1327, 2-C-1328, 2-C-1329, 2-C-1330, 2-C-1331, 2-C-1332, 2-C-1333, 2-C-1334, 2-C-1335, 2-C-1336, 2-C-1337, 2-C-1338, 2-C-1339, 2-C-1340, 2-C-1341, 2-C-1342, 2-C-1343, 2-C-1344, 2-C-1345, 2-C-1346, 2-C-1347, 2-C-1348, 2-C-1349, 2-C-1350, 2-C-1351, 2-C-1352, 2-C-1353, 2-C-1354, 2-C-1355, 2-C-1356, 2-C-1357, 2-C-1358, 2-C-1359, 2-C-1360, 2-C-1361, 2-C-1362, 2-C-1363, 2-C-1364, 2-C-1365, 2-C-1366, 2-C-1367, 2-C-1368, 2-C-1369, 2-C-1370, 2-C-1371, 2-C-1372, 2-C-1373, 2-C-1374, 2-C-1375, 2-C-1376, 2-C-1377, 2-C-1378, 2-C-1379, 2-C-1380, 2-C-1381, 2-C-1382, 2-C-1383, 2-C-1384, 2-C-1385, 2-C-1386, 2-C-1387, 2-C-1388, 2-C-1389, 2-C-1390, 2-C-1391, 2-C-1392, 2-C-1393, 2-C-1394, 2-C-1395, 2-C-1396, 2-C-1397, 2-C-1398, 2-C-1399, 2-C-1400, 2-C-1401, 2-C-1402, 2-C-1403, 2-C-1404, 2-C-1405, 2-C-1406, 2-C-1407, 2-C-1408, 2-C-1409, 2-C-1410, 2-C-1411, 2-C-1412, 2-C-1413, 2-C-1414, 2-C-1415, 2-C-1416, 2-C-1417, 2-C-1418, 2-C-1419, 2-C-1420, 2-C-1421, 2-C-1422, 2-C-1423, 2-C-1424, 2-C-1425, 2-C-1426, 2-C-1427, 2-C-1428, 2-C-1429, 2-C-1430, 2-C-1431, 2-C-1432, 2-C-1433, 2-C-1434, 2-C-1435, 2-C-1436, 2-C-1437, 2-C-1438, 2-C-1439, 2-C-1440, 2-C-1441, 2-C-1442, 2-C-1443, 2-C-1444, 2-C-1445, 2-C-1446, 2-C-1447, 2-C-1448, 2-C-1449, 2-C-1450, 2-C-1451, 2-C-1452, 2-C-1453, 2-C-1454, 2-C-1455, 2-C-1456, 2-C-1457, 2-C-1458, 2-C-1459, 2-C-1460, 2-C-1461, 2-C-1462, 2-C-1463, 2-C-1464, 2-C-1465, 2-C-1466, 2-C-1467, 2-C-1468, 2-C-1469, 2-C-1470, 2-C-1471, 2-C-1472, 2-C-1473, 2-C-1474, 2-C-1475, 2-C-1476, 2-C-1477, 2-C-1478, 2-C-1479, 2-C-1480, 2-C-1481, 2-C-1482, 2-C-1483, 2-C-1484, 2-C-1485, 2-C-1486, 2-C-1487, 2-C-1488, 2-C-1489, 2-C-1490, 2-C-1491, 2-C-1492, 2-C-1493, 2-C-1494, 2-C-1495, 2-C-1496, 2-C-1497, 2-C-1498, 2-C-1499, 2-C-1500, 2-C-1501, 2-C-1502, 2-C-1503, 2-C-1504, 2-C-1505, 2-C-1506, 2-C-1507, 2-C-1508, 2-C-1509, 2-C-1510, 2-C-1511, 2-C-1512, 2-C-1513, 2-C-1514, 2-C-1515, 2-C-1516, 2-C-1517, 2-C-1518, 2-C-1519, 2-C-1520, 2-C-1521, 2-C-1522, 2-C-1523, 2-C-1524, 2-C-1525, 2-C-1526, 2-C-1527, 2-C-1528, 2-C-1529, 2-C-1530, 2-C-1531, 2-C-1532, 2-C-1533, 2-C-1534, 2-C-1535, 2-C-1536, 2-C-1537, 2-C-1538, 2-C-1539, 2-C-1540, 2-C-1541, 2-C-1542, 2-C-1543, 2-C-1544, 2-C-1545, 2-C-1546, 2-C-1547, 2-C-1548, 2-C-1549, 2-C-1550, 2-C-1551, 2-C-1552, 2-C-1553, 2-C-1554, 2-C-1555, 2-C-1556, 2-C-1557, 2-C-1558, 2-C-1559, 2-C-1560, 2-C-1561, 2-C-1562, 2-C-1563, 2-C-1564, 2-C-1565, 2-C-1566, 2-C-1567, 2-C-1568, 2-C-1569, 2-C-1570, 2-C-1571, 2-C-1572, 2-C-1573, 2-C-1574, 2-C-1575, 2-C-1576, 2-C-1577, 2-C-1578, 2-C-1579, 2-C-1580, 2-C-1581, 2-C-1582, 2-C-1583, 2-C-1584, 2-C-1585, 2-C-1586, 2-C-1587, 2-C-1588, 2-C-1589, 2-C-1590, 2-C-1591, 2-C-1592, 2-C-1593, 2-C-1594, 2-C-1595, 2-C-1596, 2-C-1597, 2-C-1598, 2-C-1599, 2-C-1600, 2-C-1601, 2-C-1602, 2-C-1603, 2-C-1604, 2-C-1605, 2-C-1606, 2-C-1607, 2-C-1608, 2-C-1609, 2-C-1610, 2-C-1611, 2-C-1612, 2-C-1613, 2-C-1614, 2-C-1615, 2-C-1616, 2-C-1617, 2-C-1618, 2-C-1619, 2-C-1620, 2-C-1621, 2-C-1622, 2-C-1623, 2-C-1624, 2-C-1625, 2-C-1626, 2-C-1627, 2-C-1628, 2-C-1629, 2-C-1630, 2-C-1631, 2-C-1632, 2-C-1633, 2-C-1634, 2-C-1635, 2-C-1636, 2-C-1637, 2-C-1638, 2-C-1639, 2-C-1640, 2-C-1641, 2-C-1642, 2-C-1643, 2-C-1644, 2-C-1645, 2-C-1646, 2-C-1647, 2-C-1648, 2-C-1649, 2-C-1650, 2-C-1651, 2-C-1652, 2-C-1653, 2-C-1654, 2-C-1655, 2-C-1656, 2-C-1657, 2-C-1658, 2-C-1659, 2-C-1660, 2-C-1661, 2-C-1662, 2-C-1663, 2-C-1664, 2-C-1665, 2-C-1666, 2-C-1667, 2-C-1668, 2-C-1669, 2-C-1670, 2-C-1671, 2-C-1672, 2-C-1673, 2-C-1674, 2-C-1675, 2-C-1676, 2-C-1677, 2-C-1678, 2-C-1679, 2-C-1680, 2-C-1681, 2-C-1682, 2-C-1683, 2-C-1684, 2-C-1685, 2-C-1686, 2-C-1687, 2-C-1688, 2-C-1689, 2-C-1690, 2-C-1691, 2-C-1692, 2-C-1693, 2-C-1694, 2-C-1695, 2-C-1696, 2-C-1697, 2-C-1698, 2-C-1699, 2-C-1700, 2-C-1701, 2-C-1702, 2-C-1703, 2-C-1704, 2-C-1705, 2-C-1706, 2-C-1707, 2-C-1708, 2-C-1709, 2-C-1710, 2-C-1711, 2-C-1712, 2-C-1713, 2-C-1714, 2-C-1715, 2-C-1716, 2-C-1717, 2-C-1718, 2-C-1719, 2-C-1720, 2-C-1721, 2-C-1722, 2-C-1723, 2-C-1724, 2-C-1725, 2-C-1726, 2-C-1727, 2-C-1728, 2-C-1729, 2-C-1730, 2-C-1731,